

NYCO[®] premium quality wollastonite

NYCO SUPPLIES PREMIUM QUALITY WOLLASTONITE TO THE WORLD

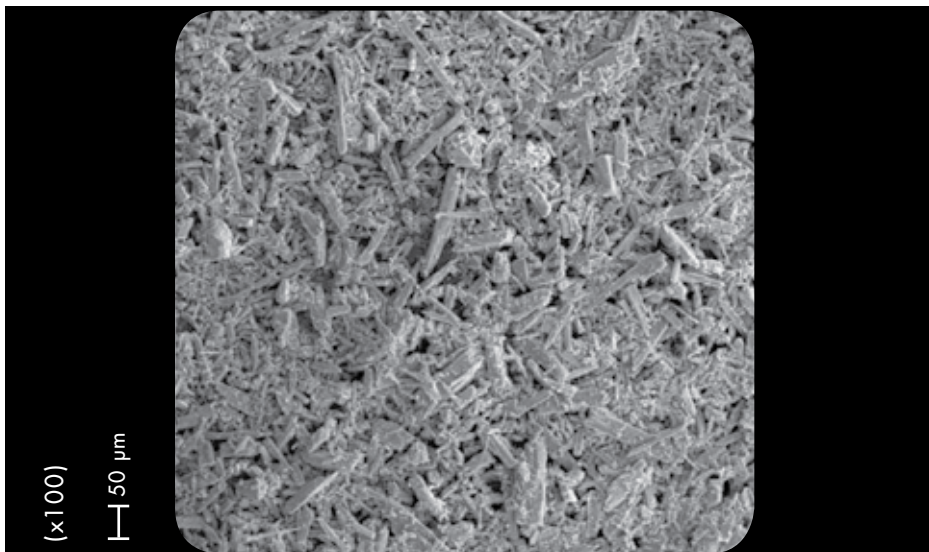
NYCO is not only the foremost supplier
of wollastonite in the world,
we are also the first...

Since our pioneering plant at Willsboro,
New York opened in 1953, to our most
recent development of a world class
deposit in the Sonora desert of Mexico,
NYCO has led the world in its growing
acceptance of wollastonite.

- highest quality ores
- state of the art processing
- world class treatment facilities
- market leading reliability
& technical service
- 100 plus years of reserves

This data contains general information and describes
typical properties only. It is offered for use by
persons qualified to determine for themselves the
suitability of our products for particular purposes.
No guarantee is made or liability assumed, the
application of this data and the products described
herein being at the sole risk of the user.

TYPICAL PROPERTY	TYPICAL VALUE	METHOD
G.E. Brightness	85	ASTM E97
Oil Absorption (lbs./100 lbs.)	25	ASTM D281
Fineness of Grind	3	Hegman
Bulk Density		
Loose (lbs./cu.ft.)	47.0	ASTM C87
(g/cc)	0.75	ASTM C87
Tapped (lbs./cu.ft.)	69.0	ASTM C87
(g/cc)	1.10	ASTM C87
Median Particle Size (µm)	9	CILAS GRANULOMETER
Surface Area (m ² /g) (BET)	1.3	ASAP 2405 (Micromeritics)
Minus 325 U.S. Mesh Screen (%)	99	Alpine Jet Sieve
Moisture (%)	0.20	Karl Fischer
Loss on Ignition (1000°C) (%)	0.40	ASTM D1208



NYAD[®] M325

CHEMICAL COMPOSITION: CaSiO₃

COMPONENT	TYPICAL VALUE (%)
CaO	46.25
SiO ₂	52.00
Fe ₂ O ₃	0.25
Al ₂ O ₃	0.40
MnO	0.025
MgO	0.50
TiO ₂	0.025
K ₂ O	0.15
Wt. Loss (1000°C)	0.40

nyco®

One Mineral, A World Of Applications

UNITED STATES

P.O. Box 368
803 Mountain View Drive
Willsboro, NY
12996-0368, USA
Tel: (518) 963-4262
Fax: (518) 963-1110

EUROPE

Belgium
Tel: (32) 10 88 13 02
Fax: (32) 10 22 65 99

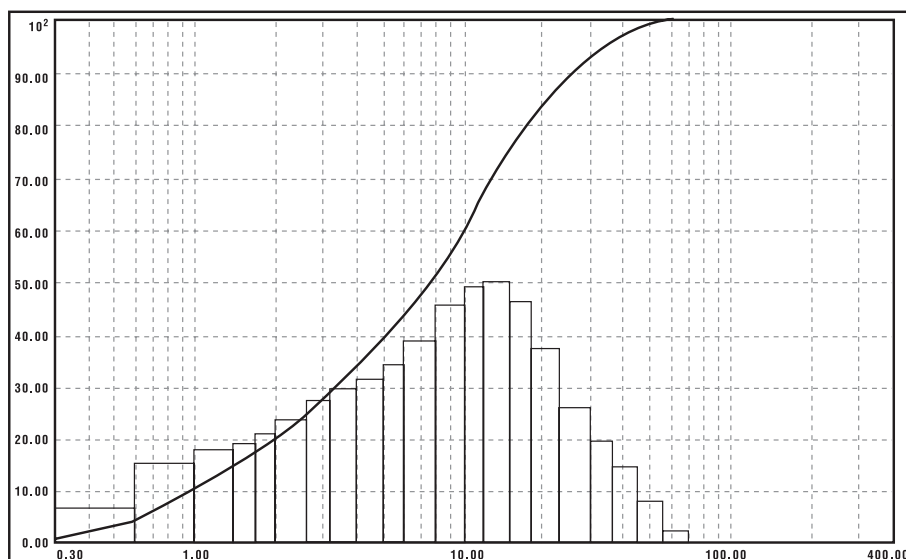
MEXICO

Hermosillo, Sonora
Mexico CP 83005
Tel: (52) 62 89 10 00
Fax: (52) 62 89 10 90

www.nycominerals.com
info@nycominerals.com

TYPICAL PROPERTIES**VALUE**

APPEARANCE	WHITE
MORPHOLOGY	ACICULAR
MOLECULAR WEIGHT	116
SPECIFIC GRAVITY	2.9
REFRACTIVE INDEX	1.63
pH (10% SLURRY)	9.9
WATER SOLUBILITY (g/100cc)	0.0095
DENSITY (lbs./cu.ft.)	181
BULKING VALUE (gal./lbs.)	0.0413
MOHS HARDNESS	4.5
COEFFICIENT OF EXPANSION (mm/mm/°C)	6.5 X 10 ⁻⁶
MELTING POINT (°C) - theoretical	1540
MELTING POINT (°C) -by ASTM D1857	1410

CILAS GRANULOMETER CURVE

Technical data sheets on other wollastonite products and comprehensive health & safety information are available upon request.

NYAD® M325